

# EASY PIECED TABLE RUNNER - MAY

Finishes to 13½" × 54½"



## REQUIRED MATERIALS

- ⅓ yd cream
- 7" × WOF green
- 6" × 21" **each** of 4 purples
- 7" × WOF light blue
- 15" × WOF purple stripe
- various colorful fabrics for appliqué
- 60" × 21" for backing

## RECOMMENDED PRODUCTS

- Wafer 1 Lightbox
- Appliqué Pressing Sheet
- Creative Grids 2½" × 24½" Ruler
- Patchwork Pins
- Magnetic Pin Caddy
- Rotary Cutter

All available at [ShabbyFabrics.com](http://ShabbyFabrics.com)

## CUT FABRICS

From **cream**, cut:

- (12) 5" × 5" squares for **piecing**

From **green**, cut:

- (3) 5" × 5" squares for **piecing**
- (2) 1½" × 13½" strips for **outer sashing**

From **each of 4 purples**, cut:

- (3) 5" × 5" squares for **piecing**

From **light blue**, cut:

- (2) 6" × 13½" rectangles for **appliqué background**

From **purple stripe**, cut:

- (4) 2½" × WOF strips for **binding**
- (2) 1½" × 13½" strips for **inner sashing**

## MAKE 9-PATCH BLOCKS

Using (4) cream squares, (4) purple squares, and (1) green square, make a 9-Patch as shown. Sew together in rows; press seams away from cream. Sew rows together; press seams open.

Block will measure 14" × 14".

Repeat to make a total of (3) 9-Patch Blocks.

As seen on our  
**EASY PIECED  
TABLE RUNNER - MAY**  
video featured on our YouTube channel:



[YouTube.com/Shabby Fabrics](https://www.youtube.com/ShabbyFabrics)

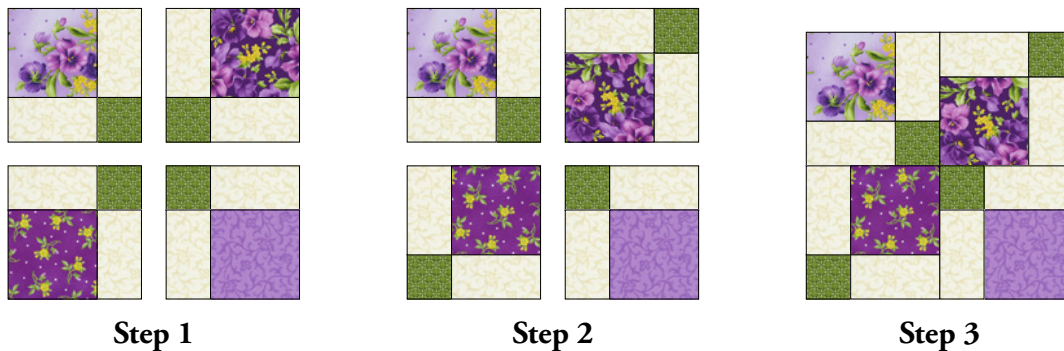
**9-Patch Block**



## DISAPPEARING 9-PATCH BLOCKS

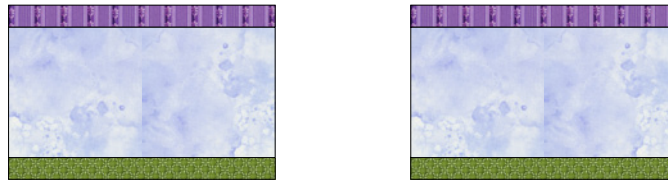
**STEP 1:** Cut 9-Patch Block in half both vertically and horizontally. **STEP 2:** Rotate blocks as shown. **STEP 3:** Sew squares back together, pressing seams as desired. Block will now measure 13½" × 13½".

Repeat for a total of three Disappearing 9-Patch Blocks. Set blocks aside for assembly at a later step.



## APPLIQUÉ

Sew (1) purple **inner sashing** strip to a light blue **background**; press toward inner sashing. Sew (1) green **outer sashing** strip to the other side; press toward outer sashing. Repeat with second background.



Your diagram has two pages, a **Reverse Diagram** and an **Assembly Diagram**. When tracing shapes for fusible appliqué, use the Reverse Diagram.

Gently peel fusible paper from the back of each shape. Refer to **Assembly Diagram** to arrange shapes on background fabric. Appliqué in place using the method and stitch of your choice.

## ASSEMBLE TABLE RUNNER

Sew blocks together in a row, pressing seams open. Sew one appliqué unit to each side as shown.



## FINISH TABLE RUNNER

Layer top, batting, and backing. Quilt as desired.

Piece binding into one long strip. (We used a straight seam so we could match up the stripes.) Fold in half lengthwise, wrong sides together, and press. Line up raw edges of the binding with the raw edge of the table runner. Sew binding to the front side of the table runner, starting at any side. Turn the binding over and hand stitch to the back of the table runner.

# EASY PIECED TABLE RUNNER MAY

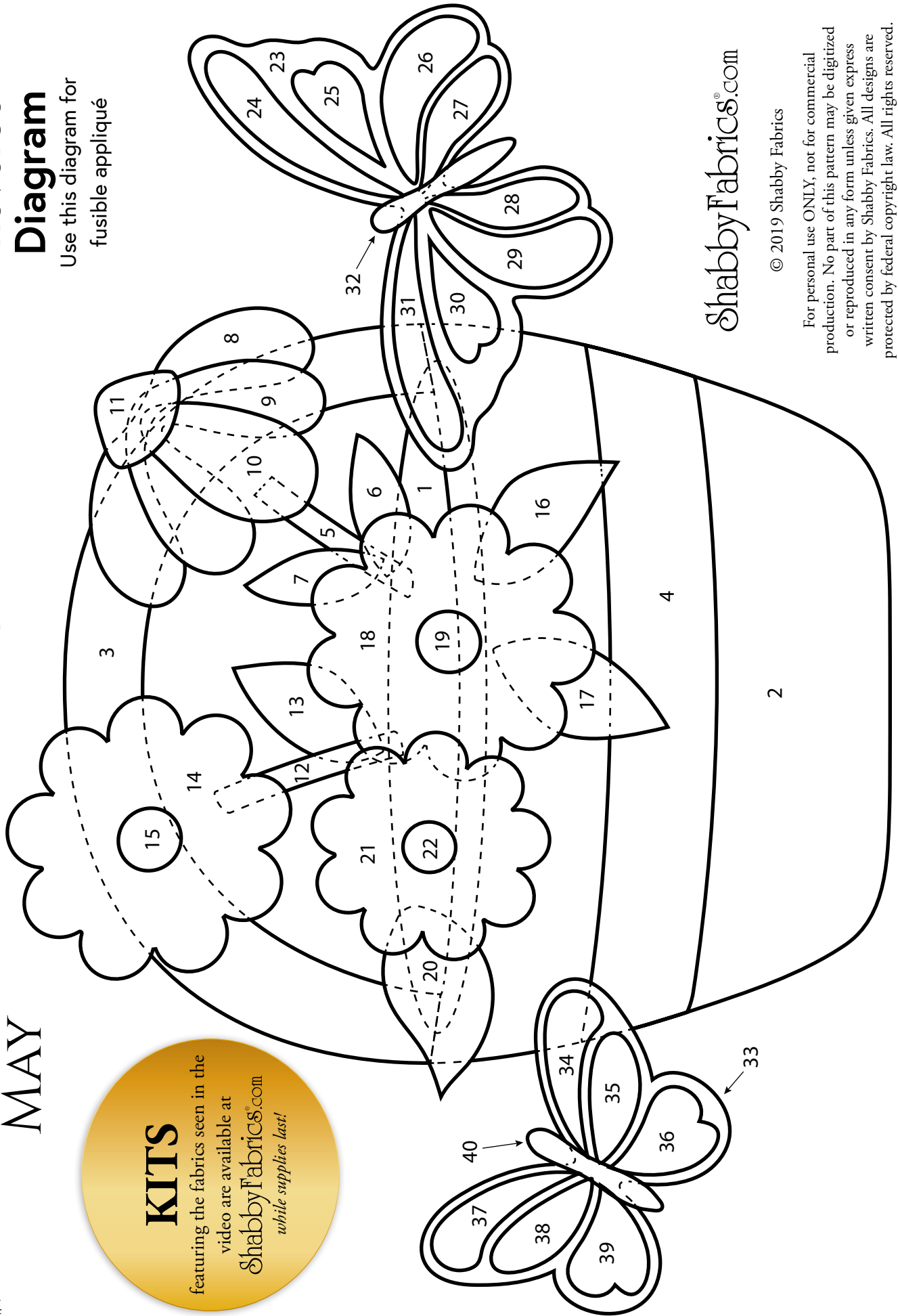
## KITS

featuring the fabrics seen in the  
video are available at  
[ShabbyFabrics.com](http://ShabbyFabrics.com)  
*while supplies last!*

Numbers indicate the order in  
which shapes are to be placed.  
Dashed lines indicate where one  
shape lies behind another.

## Reverse Diagram

Use this diagram for  
fusible appliqué



[ShabbyFabrics.com](http://ShabbyFabrics.com)

© 2019 Shabby Fabrics

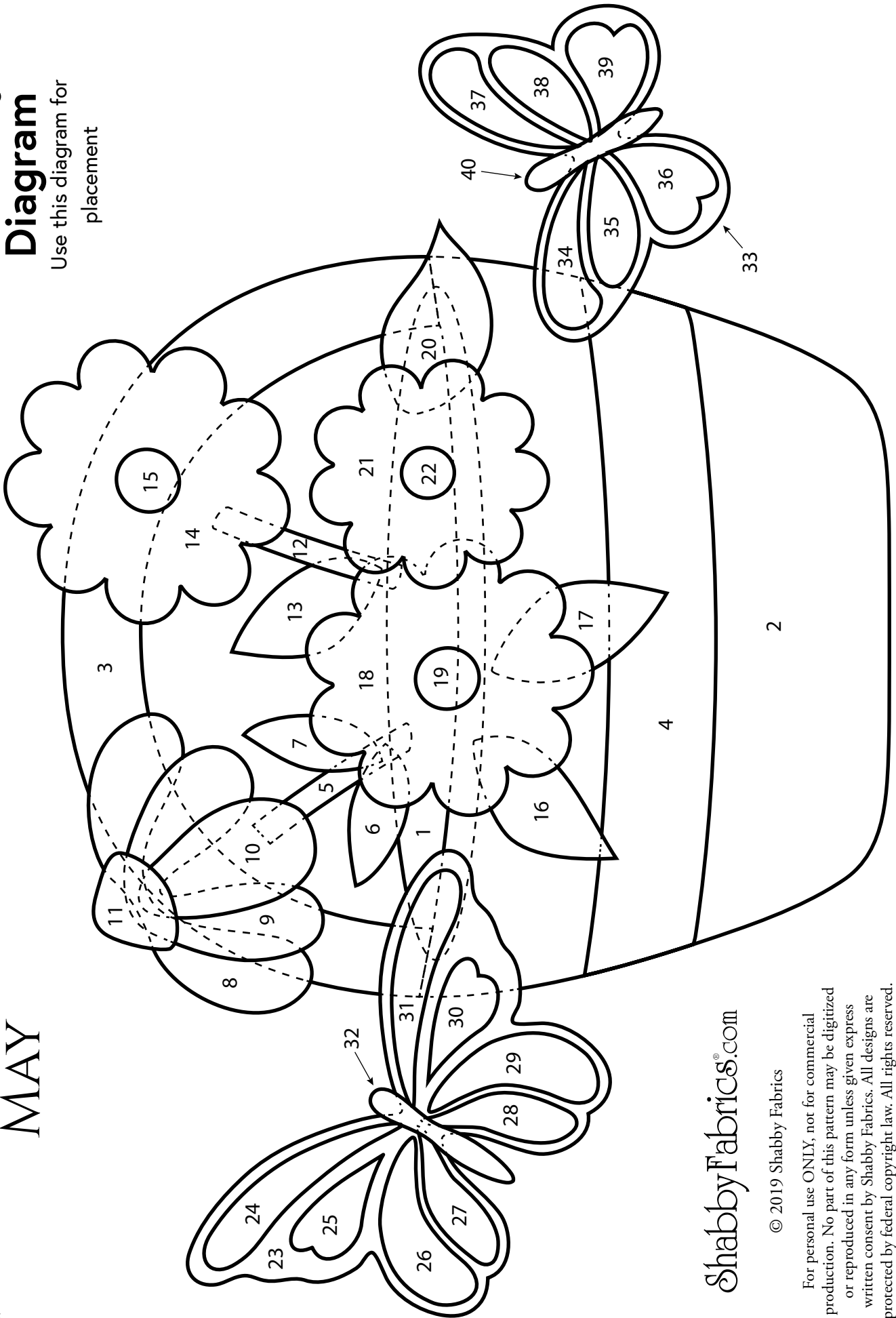
For personal use ONLY, not for commercial  
production. No part of this pattern may be digitized  
or reproduced in any form unless given express  
written consent by Shabby Fabrics. All designs are  
protected by federal copyright law. All rights reserved.

# EASY PIECED TABLE RUNNER MAY

Numbers indicate the order in which shapes are to be placed.  
Dashed lines indicate where one shape lies behind another.

## Assembly Diagram

Use this diagram for placement



ShabbyFabrics.com

© 2019 Shabby Fabrics

For personal use ONLY, not for commercial production. No part of this pattern may be digitized or reproduced in any form unless given express written consent by Shabby Fabrics. All designs are protected by federal copyright law. All rights reserved.