

This diagram is for use with the
REUSABLE GROCERY BAG

project featured on our YouTube channel:

 [YouTube.com/ShabbyFabrics](https://www.youtube.com/ShabbyFabrics)

Finished Size: 18½" × 19½"

REQUIRED MATERIALS

1 yard fabric
(see cutting guide on page 3)

7" elastic (optional)

page 1 of 3

ShabbyFabrics[®].com

© 2017 Jennifer Bosworth
ShabbyFabrics.com

No part of this pattern may be digitized or reproduced in any form unless given express written consent by Shabby Fabrics.
All designs, photographs, and images are protected by federal copyright law. All rights reserved.

Align arrows on page 1 with arrows on page 2.
Join pages with glue or tape.

Handle Lining

cut (2) on fold

After cutting the main bag with the full diagram,
trim diagram to this line to serve as template to cut (2) handle lining pieces

Main Bag

cut (2) on fold

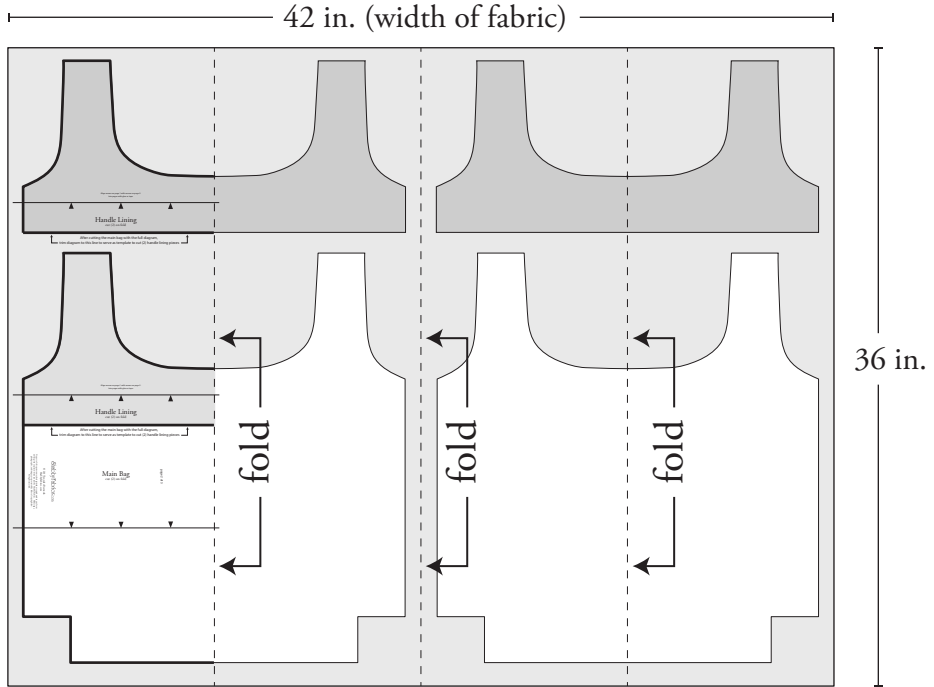
page 2 of 3

ShabbyFabrics.com

© 2017 Jennifer Bosworth
ShabbyFabrics.com

No part of this pattern may be digitized or reproduced in any form
unless given express written consent by Shabby Fabrics. All designs,
photographs, and images are protected by federal copyright law.
All rights reserved.

Cutting Guide



Attach elastic here



Align arrows on page 2 with arrows on page 3.
Join pages with glue or tape.

ShabbyFabrics.com

© 2017 Jennifer Bosworth
ShabbyFabrics.com

No part of this pattern may be digitized or reproduced in any form unless given express written consent by Shabby Fabrics. All designs, photographs, and images are protected by federal copyright law. All rights reserved.

page 3 of 3