

SELF-BINDING PLACEMATS

Makes (4) placemats, 12" x 18" each

PLEASE NOTE

All seams are $\frac{1}{4}$ "

RST = Right Sides Together

REQUIRED MATERIALS

- 1 yard black poinsettias for **placemat tops**
- 1 yard black dots for **placemat backs**

RECOMMENDED PRODUCTS

- FriXion® Clicker Pen
- Bohin® Mechanical Pencil .9mm White
- Creative Grids® Rectangle Ruler 2½" x 6½" - Shabby Fabrics
- Clover® Point-2-Point Turner
- Clover® Magnetic Pin Caddy
- Clover® Patchwork Pins (Extra Fine)

All available at ShabbyFabrics.com

CUT FABRICS

From **black poinsettias**, cut:

- (4) 10½" x 16½" rectangles for **placemat tops**

From **black dots**, cut:

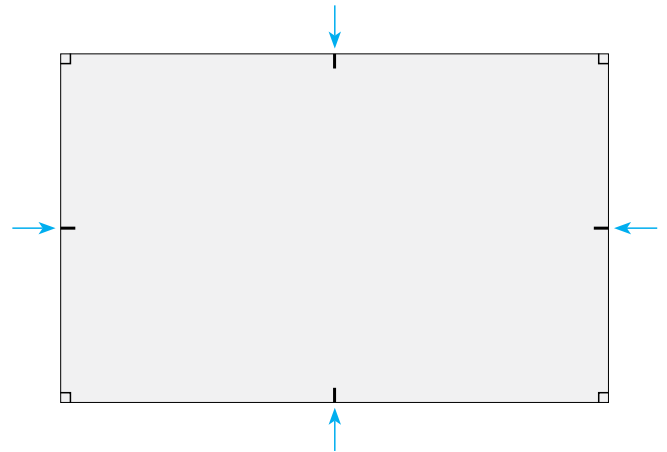
- (4) 14½" x 20½" rectangles for **placemat backs**

CONSTRUCTION

STEP 1: On the wrong side of (1) **placemat top** rectangle, use a pen to mark a $\frac{1}{4}$ " x $\frac{1}{4}$ " square in each corner.



STEP 2: On the wrong side of the same rectangle, use a pen (or pin) to mark the middle point of each raw edge.



KITS available from
ShabbyFabrics.com
while supplies last

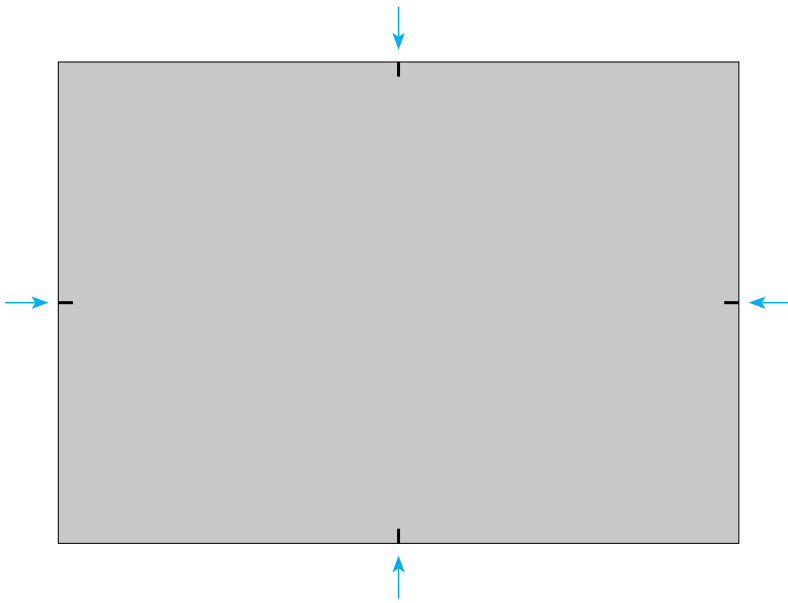
As seen on our
**HOW TO MAKE
SELF-BINDING
PLACEMATS**

video featured on our YouTube channel:

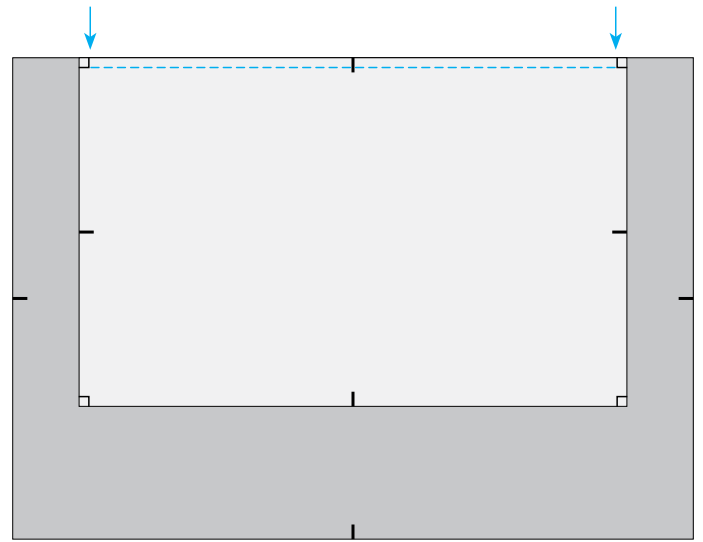


[YouTube.com/Shabby Fabrics](https://www.youtube.com/ShabbyFabrics)

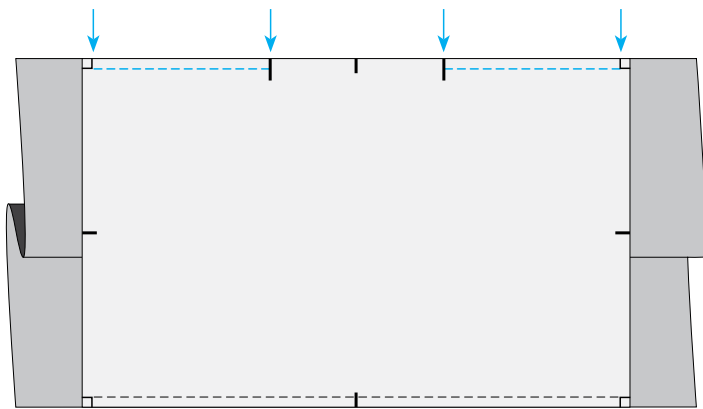
STEP 3: On the wrong side of (1) **placemat back** rectangle, use a pen (or pin) to mark the middle point of each raw edge.



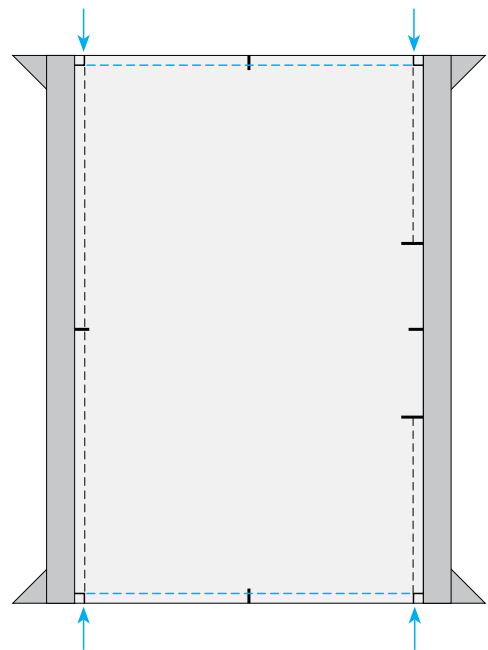
STEP 4: Place placemat top on placemat back, RST, aligning center marks along one long raw edge. Pin. Sew together, beginning and ending at 1/4" marks, backstitching at beginning and end.



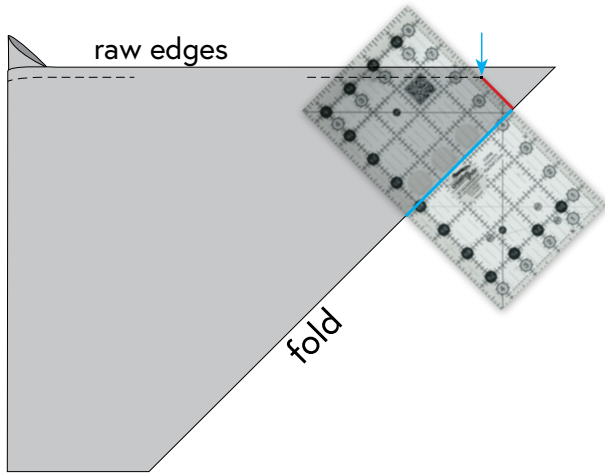
STEP 5: Rotate placemat to work on opposite long end. Align center marks along raw edge. Before sewing, mark a gap of about 5" to leave open for turning. Pin. Sew together, beginning at 1/4" mark, ending at gap mark, resuming at gap mark, and ending at 1/4" mark, backstitching at each beginning and end.



STEP 6: Rotate placemat to work on short ends. Align center marks along raw edge. Before sewing, be sure the excess corner fabric is well out of the way and does not get caught in the seam. Pin. Sew together, beginning and ending at 1/4" marks, backstitching at beginning and end. Repeat for opposite short end.

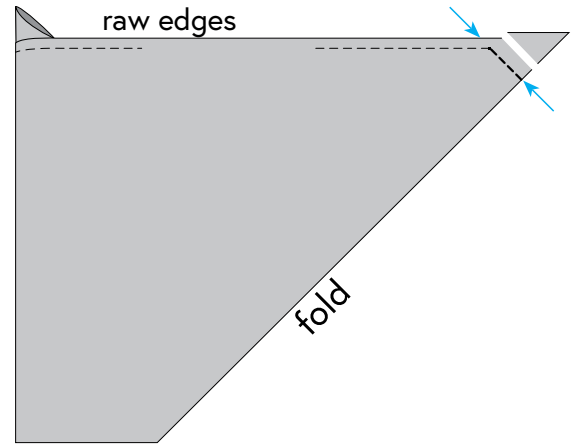


STEP 7: Fold one corner of the placemat so that the raw edge of one short side is aligned with the raw edge of its neighboring long side. Line up your ruler **parallel to the fold**, and just touching the end of your seam. Mark your **stitching line** with a FriXion pen.



STEP 8: Stitch on the line. Trim corner to ¼" outside the stitched line.

Repeat for remaining three corners.



STEP 9: Turn right side out. *We recommend using a point turner to make nice, sharp points in the corners.* Press well, folding the back/binding fabric at the opening under ¼", keeping all seams pressed toward the border.

STEP 10: Topstitch ¼" - ⅛" outside the seam to close the opening and to create the appearance of binding.

Repeat steps 1-10 to make a total of (4) placemats.

